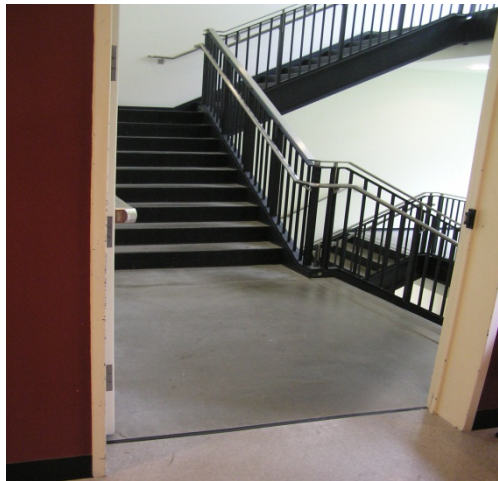


Evacuation Assistance Locations and Areas of Refuge



Evacuation Assistance Location

A location in a building designed to hold occupants during a fire or other emergency, when evacuation may not be safe or possible, until first responders can rescue them. In most of Western's buildings, this is the stairwell.



Areas of Refuge

A location with two-way communication in a building designed to hold occupants during a fire or other emergency, when evacuation may not be safe or possible, until first responders can rescue them.



Two-way communication

Area of Refuge con't

The required two-way communication may be in the stairwell or hallway and connects to University Police Dispatch. The Area of Refuge is in the area of the two-way communication device. There is only one building at Western that has these areas; Wilson Library in the south-central stairwell.

Shown here, the space between the main Library area and the stairwell is the Area of Refuge

Stairwell

